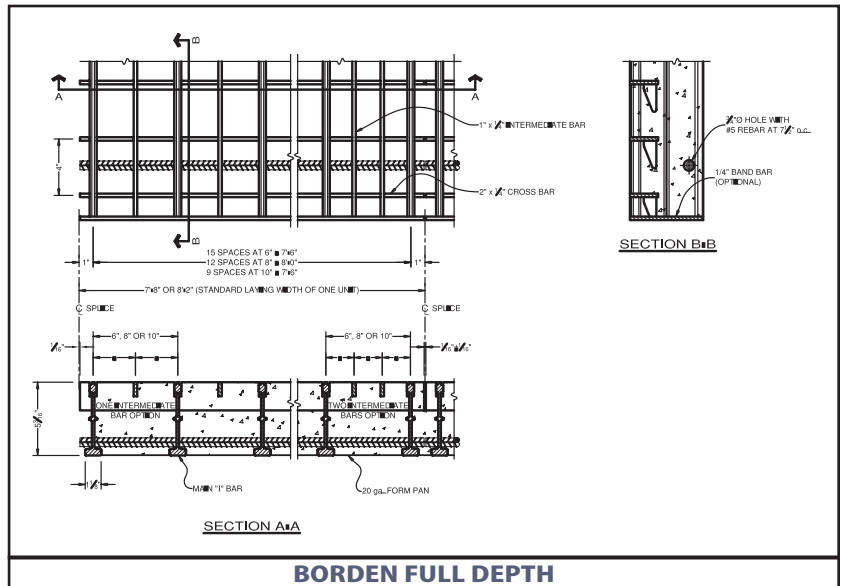




www.bordengratings.com

## Concrete Filled Roadway Grating



### LOAD TABLE

Grating Type	Bearing Bar Centre	Supplemental Bars	Weight		Steel Only		Cracked Composite Section				
			Steel Only	Steel & Concrete	Top Steel S	Bottom Steel S	+Sc	+Sc	-Sc	-Sc	lcr
			lbs./sq.ft.	lbs./sq.ft.	in. <sup>3</sup> /ft.	in. <sup>3</sup> /ft.	in. <sup>3</sup> /ft.	in. <sup>3</sup> /ft.	in. <sup>3</sup> /ft.	in. <sup>3</sup> /ft.	in. <sup>4</sup> /ft.
			kg/sq.m	kg/sq.m	mm <sup>3</sup> /m	mm <sup>3</sup> /m	mm <sup>3</sup> /m	mm <sup>3</sup> /m	mm <sup>3</sup> /m	mm <sup>3</sup> /m	mm <sup>4</sup> /m
R/R 6x4	6	0	18.72	75.46	2.630	4.116	63.60	4.87	58.80	2.79	128.90
			91.40	368.43	3.59E+06	2.21E+05	3.42E+06	2.62E+05	3.16E+06	1.50E+05	1.76E+08
R/R 8x4	8	0	15.92	73.48	1.973	3.087	55.70	3.78	51.50	2.13	104.10
			77.73	358.76	2.69E+06	1.66E+05	2.99E+06	2.03E+05	2.77E+06	1.15E+05	1.42E+08
R/R 10x4	10	0	14.22	72.28	1.096	2.470	50.40	3.06	43.40	1.73	88.00
			69.43	352.90	1.50E+06	1.33E+05	2.71E+06	1.65E+05	2.33E+06	9.30E+04	1.20E+08
R/R-L 6-3x4	6	1	20.35	76.61	4.500	4.700	74.20	5.04	72.90	4.78	139.40
			99.36	374.04	6.15E+06	2.53E+05	3.99E+06	2.71E+05	3.92E+06	2.57E+05	1.90E+08
R/R-L 8-4x4	8	1	17.13	74.34	3.375	3.525	63.10	3.85	70.30	3.51	110.50
			83.64	362.96	4.61E+06	1.90E+05	3.39E+06	2.07E+05	3.78E+06	1.89E+05	1.51E+08
R/R-L 10-5x4	10	1	15.19	72.97	2.700	2.820	56.20	3.12	62.20	2.86	92.40
			74.16	356.27	3.69E+06	1.52E+05	3.02E+06	1.68E+05	3.34E+06	1.54E+05	1.26E+08
R/R-L 6-2x4	6	2	21.42	77.36	6.240	4.980	84.50	5.11	81.20	6.69	148.10
			104.58	377.70	8.52E+06	2.68E+05	4.54E+06	2.75E+05	4.37E+06	3.60E+05	2.02E+08
R/R-L 8-2.67x4	8	2	17.94	74.91	4.680	3.735	70.50	3.90	69.50	5.11	116.10
			87.59	365.74	6.39E+06	2.01E+05	3.79E+06	2.10E+05	3.74E+06	2.75E+05	1.59E+08
R/R-L 10-3.33x4	10	2	15.83	73.42	3.744	2.988	61.70	3.16	623.00	4.15	96.20
			77.29	358.47	5.11E+06	1.61E+05	3.32E+06	1.70E+05	3.35E+07	2.23E+05	1.31E+08

Grating Type	CAN/CSA-S6-06 CL-625								AASHTO HS20-1996							
	(in.)								(in.)							
	(mm.)								(mm.)							
	Bearing Bars Parallel to Traffic				Bearing Bars Pependicular to Traffic				Bearing Bars Parallel to Traffic				Bearing Bars Pependicular to Traffic			
	Strength		Deflection		Strength	Deflection			Strength	Deflection			Strength	Deflection		
	L/800	L/700	L/600		L/800	L/700	L/600		L/800	L/700	L/600		L/800	L/700	L/600	
R/R 6x4	32.4	-	-	-	57.6	44.4	50.4	50.4	32.4	-	-	-	57.6	44.4	46.8	50.4
	823	-	-	-	1463	1128	1280	1280	823	-	-	-	1463	1128	1189	1280
R/R 8x4	25.2	-	-	-	39.6	-	-	-	25.2	-	-	-	39.6	-	-	-
	640	-	-	-	1006	-	-	-	640	-	-	-	1006	-	-	-
R/R 10x4	21.6	-	-	-	27.6	-	-	-	21.6	-	-	-	27.6	-	-	-
	549	-	-	-	701	-	-	-	549	-	-	-	701	-	-	-
R/R-L 6-3x4	48.0	-	-	-	110.4	45.6	48.0	51.6	48.0	-	-	-	110.4	45.6	48.0	51.6
	1219	-	-	-	2804	41	1219	1311	1219	-	-	-	2804	1158	1219	1311
R/R-L 8-4x4	32.4	-	-	-	76.8	40.8	43.2	46.8	39.6	-	-	-	76.8	40.8	43.2	46.8
	823	-	-	-	1951	47	1097	1189	1006	-	-	-	1951	1036	1097	1189
R/R-L 10-5x4	43.2	-	-	-	60.0	34.8	40.8	43.2	32.4	-	-	-	60.0	34.8	40.8	43.2
	1097	-	-	-	1524	47	1036	1097	823	-	-	-	1524	884	1036	1097
R/R-L 6-2x4	52.8	-	-	-	118.8	42.0	49.2	52.8	52.8	-	-	-	118.8	46.8	49.2	52.8
	1341	-	-	-	88	1067	1250	1341	1341	-	-	-	3018	1189	1250	1341
R/R-L 8-2.67x4	43.2	-	-	-	87.6	42.0	44.4	48.0	43.2	-	-	-	87.6	42.0	44.4	48.0
	1097	-	-	-	2225	1067	1128	1219	1097	-	-	-	2225	1067	1128	1219
R/R-L 10-3.33x4	36.0	-	-	-	67.2	38.4	40.8	44.4	36.0	-	-	-	67.2	38.4	40.8	44.4
	914	-	-	-	1707	975	1036	1128	914	-	-	-	1707	975	1036	1128