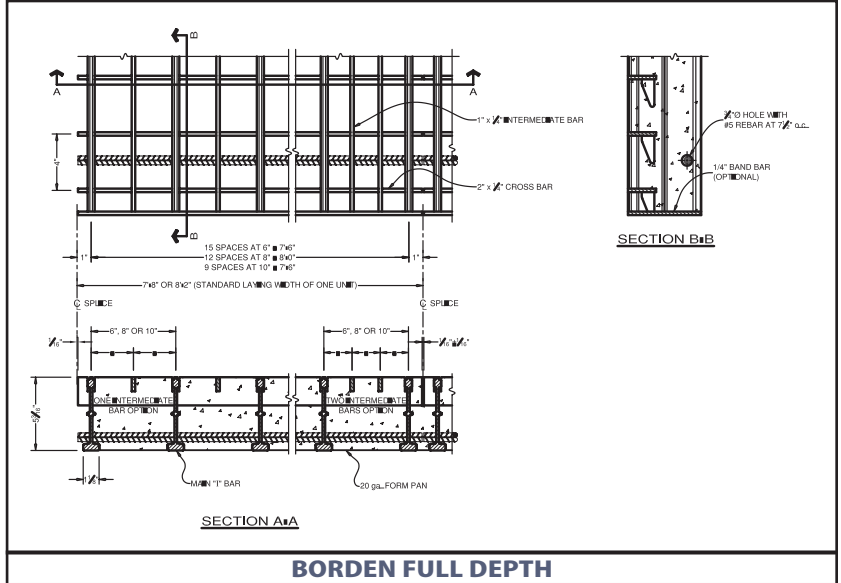




www.bordengratings.com

# Concrete Filled Roadway Grating



## LOAD TABLE

Grating Type	Bearing Bar Centre	Supplemental Bars	Weight		Steel Only		Cracked Composite Section				
			Steel Only	Steel & Concrete	Top Steel S	Bottom Steel S	Sc+	Ss+	Sc-	Ss-	lcr
			lbs./sq.ft. kg/sq.m	lbs./sq.ft. kg/sq.m	in. <sup>3</sup> /ft. mm <sup>3</sup> /m	in. <sup>3</sup> /ft. mm <sup>3</sup> /m	in. <sup>3</sup> /ft. mm <sup>3</sup> /m	in. <sup>3</sup> /ft. mm <sup>3</sup> /m	in. <sup>3</sup> /ft. mm <sup>3</sup> /m	in. <sup>3</sup> /ft. mm <sup>3</sup> /m	in. <sup>3</sup> /ft. mm <sup>3</sup> /m
R/R 6x4	6	0	18.72	75.46	2.630	4.116	63.63	4.87	58.78	2.79	128.92
			91.40	368.43	1.41E+05	2.21E+05	3.42E+06	2.62E+05	3.16E+06	1.50E+05	1.76E+08
R/R 8x4	8	0	15.92	73.48	1.973	3.087	55.73	3.78	51.50	2.13	104.06
			77.73	358.76	1.06E+05	1.66E+05	3.00E+06	2.03E+05	2.77E+06	1.14E+05	1.42E+08
R/R 10x4	10	0	14.22	72.28	1.58	2.470	50.38	3.06	43.43	1.73	88.00
			69.43	352.90	1.50E+06	1.33E+05	2.71E+06	1.64E+05	2.34E+06	9.28E+04	1.20E+08
R/R-L 6-3x4	6	1	20.35	76.61	4.14	4.62	73.24	4.97	68.37	4.48	137.66
			99.36	374.04	2.22E+05	2.48E+05	3.94E+06	2.67E+05	3.68E+06	2.41E+05	1.88E+08
R/R-L 4-4x4	8	1	17.13	74.34	3.10	3.46	62.39	3.81	65.84	3.25	109.36
			83.64	362.96	1.67E+05	1.86E+05	3.35E+06	2.05E+05	3.54E+06	1.75E+05	1.49E+08
R/R-L 10-5x4	10	1	15.19	72.97	2.48	2.77	55.67	3.10	58.17	2.65	91.60
			74.16	356.27	1.33E+05	1.49E+05	2.99E+06	1.67E+05	3.13E+06	1.42E+05	1.25E+08
R/R-L 6-2x4	6	2	21.42	77.36	5.56	4.89	82.70	5.01	74.74	6.16	145.09
			104.58	377.70	2.99E+05	2.63E+05	4.45E+06	2.69E+05	4.02E+06	3.31E+05	1.98E+08
R/R-L 8-2.67x4	8	2	17.94	74.91	4.17	3.67	69.30	3.83	63.74	4.69	114.14
			87.59	365.74	2.24E+05	1.97E+05	3.73E+06	2.06E+05	3.43E+06	2.52E+05	1.56E+08
R/R-L 10-3.33x4	10	2	15.83	73.42	3.33	2.93	60.80	3.12	56.65	3.80	94.89
			77.29	358.47	1.79E+05	1.58E+05	3.27E+06	1.68E+05	3.05E+06	2.04E+05	1.30E+08

Grating Type	CAN/CSA-S6-06 CL-625										AASHTO HS20-1996									
	(in.)										(in.)									
	(mm.)										(mm.)									
	Bearing Bars Parallel to Traffic					Bearing Bars Pependicular to Traffic					Bearing Bars Parallel to Traffic					Bearing Bars Pependicular to Traffic				
Strength	Deflection				Strength	Deflection				Strength	Deflection				Strength	Deflection				
	L/800	L/700	L/600	L/500		L/800	L/700	L/600	L/500		L/800	L/700	L/600	L/500		L/800	L/700	L/600	L/500	
R/R 6x4	32.25	-	-	-	57.67	44.08	46.70	49.97	54.23	70.86	67.64	-	-	-	118.95	56.98	60.31	64.48	69.91	
	819	-	-	-	1465	1120	1186	1269	1377	1800	1718	-	-	-	3021	1447	1532	1638	1776	
R/R 8x4	25.79	-	-	-	39.24	-	-	-	-	51.80	-	-	-	-	86.11	53.43	56.31	59.93	64.65	
	655	-	-	-	997	-	-	-	-	1316	-	-	-	-	2187	1357	1430	1522	1642	
R/R 10x4	21.85	-	-	-	27.76	-	-	-	-	40.16	-	-	-	-	65.84	51.63	54.15	57.33	61.52	
	555	-	-	-	705	-	-	-	-	1020	-	-	-	-	1672	1311	1375	1456	1563	
R/R-L 6-3x4	45.55	-	-	-	102.29	45.34	48.06	51.46	55.87	114.45	69.80	74.43	80.18	87.61	176.00	71.98	76.48	82.08	71.98	
	1157	-	-	-	2598	1152	1221	1307	1419	2907	1773	1890	2037	2225	4470	1828	1942	2085	1828	
R/R-L 4-4x4	36.74	-	-	-	70.33	41.11	43.50	46.48	50.37	84.02	66.15	70.51	75.94	82.95	141.35	54.46	57.42	61.15	66.01	
	933	-	-	-	1786	1044	1105	1181	1279	2134	1680	1791	1929	2107	3590	1383	1459	1553	1677	
R/R-L 10-5x4	30.85	-	-	-	53.80	38.23	40.37	43.07	46.59	66.72	63.92	-	-	-	111.84	52.36	54.95	58.22	62.51	
	784	-	-	-	1366	971	1026	1094	1183	1695	1624	-	-	-	2841	1330	1396	1479	1588	
R/R-L 6-2x4	49.37	-	-	-	116.19	46.43	49.24	52.74	57.29	124.99	71.67	76.43	82.35	89.99	193.62	59.96	63.53	67.99	73.79	
	1254	-	-	-	2951	1179	1251	1340	1455	3175	1820	1941	2092	2286	4918	1523	1614	1727	1874	
R/R-L 8-2.67x4	42.80	-	-	-	85.73	41.86	44.30	47.36	51.34	100.49	67.51	71.98	77.53	84.69	163.20	55.39	58.42	62.24	67.23	
	1087	-	-	-	2177	1063	1125	1203	1304	2552	1715	1828	1969	2151	4145	1407	1484	1581	1708	
R/R-L 10-3.33x4	35.41	-	-	-	66.59	38.78	40.97	43.72	47.31	80.10	65.00	69.29	74.61	-	134.69	53.02	55.67	59.01	63.39	
	899	-	-	-	1691	985	1041	1111	1202	2034	1651	1760	1895	-	3421	1347	1414	1499	1610	