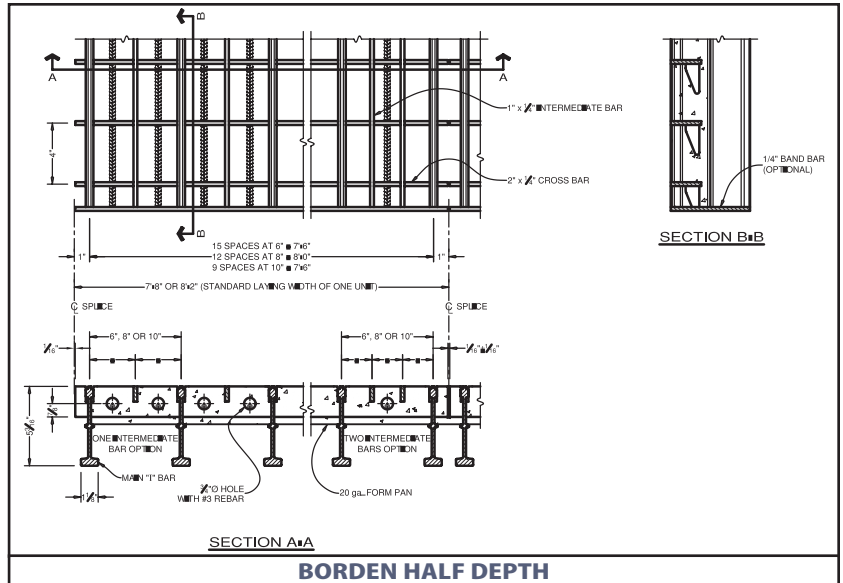




www.bordengratings.com

## Concrete Filled Roadway Grating



### LOAD TABLE

Grating Type	Bearing Bar Centre	Supplemental Bars	Weight		Steel Only		Cracked Composite Section				
			Steel Only	Steel & Concrete	Top Steel S	Bottom Steel S	Sc+	Ss+	Sc-	Ss-	Icr
			lbs./sq.ft. kg/sq.m	lbs./sq.ft. kg/sq.m	in. <sup>3</sup> /ft. mm <sup>3</sup> /m	in. <sup>3</sup> /ft. mm <sup>3</sup> /m	in. <sup>3</sup> /ft. mm <sup>3</sup> /m	in. <sup>3</sup> /ft. mm <sup>3</sup> /m	in. <sup>3</sup> /ft. mm <sup>3</sup> /m	in. <sup>3</sup> /ft. mm <sup>3</sup> /m	in. <sup>3</sup> /ft. mm <sup>3</sup> /m
R/R-L 6-3x4	6	1	18.86	49.57	4.137	4.62	73.24	4.92	0.31	4.83	137.66
			92.08	242.02	2.22E+05	2.48E+05	3.94E+06	2.64E+05	1.69E+04	2.60E+05	1.88E+08
R/R-L 4-4x4	8	1	15.63	46.12	3.103	3.46	62.57	3.78	0.24	3.62	109.47
			76.31	225.18	1.67E+05	1.86E+05	3.36E+06	2.03E+05	1.26E+04	1.95E+05	1.49E+08
R/R-L 10-5x4	10	1	13.67	44.16	2.482	2.77	55.67	3.10	0.36	2.90	91.68
			66.74	215.61	1.33E+05	1.49E+05	2.99E+06	1.67E+05	1.92E+04	1.56E+05	1.25E+08
R/R-L 6-2x4	6	2	19.93	50.33	5.558	4.89	81.76	5.00	4.28	6.30	143.51
			97.31	245.73	2.99E+05	2.63E+05	4.40E+06	2.69E+05	2.30E+05	3.39E+05	1.96E+08
R/R-L 8-2.67x4	8	2	16.43	46.69	4.169	3.67	68.66	3.82	3.16	4.72	113.13
			80.22	227.96	2.24E+05	1.97E+05	3.69E+06	2.05E+05	1.70E+05	2.54E+05	1.54E+08
R/R-L 10-3.33x4	10	2	14.32	44.62	3.335	2.93	60.34	3.11	2.49	3.76	94.18
			69.92	217.85	1.79E+05	1.58E+05	3.24E+06	1.67E+05	1.34E+05	2.02E+05	1.29E+08

Grating Type	CAN/CSA-S6-06 CL-625										AASHTO HS20-1996			
	(in.)										(in.)			
	(mm.)										(mm.)			
	Bearing Bars Parallel to Traffic					Bearing Bars Pependicular to Traffic					Bearing Bars Parallel to Traffic			
Strength	Deflection				Strength	Deflection				Strength	Deflection			
	L/800	L/700	L/600	L/500		L/800	L/700	L/600	L/500		L/800	L/700	L/600	L/500
R/R-L 6-3x4	48.44	-	-	-	113.68	41.72	44.15	47.20	51.16	122.4155	58.57	62.03	66.36	71.98
	1230	-	-	-	2887	1060	1121	1199	1299	3109	1488	1575	1685	1828
R/R-L 4-4x4	40.41	-	-	-	81.48	37.96	40.09	42.76	46.24	94.4642	54.48	57.45	61.17	66.04
	1026	-	-	-	2070	964	1018	1086	1175	2399	1384	1459	1554	1677
R/R-L 10-5x4	33.35	-	-	-	61.46	35.39	37.30	39.71	42.85	73.8433	52.38	54.96	58.23	62.53
	847	-	-	-	1561	899	947	1009	1088	1876	1330	1396	1479	1588
R/R-L 6-2x4	53.49	-	-	-	118.59	42.46	44.95	48.06	52.12	133.2134	59.62	63.16	67.59	73.35
	1359	-	-	-	3012	1078	1142	1221	1324	3384	1514	1604	1717	1863
R/R-L 8-2.67x4	42.36	-	-	-	87.20	38.47	40.64	43.36	46.91	100.1551	55.19	58.21	62.51	66.97
	1076	-	-	-	2215	977	1032	1101	1192	2544	1402	1479	1579	1701
R/R-L 10-3.33x4	35.39	-	-	-	67.44	35.76	37.70	40.15	43.34	79.8172	52.88	55.51	58.84	63.20
	899	-	-	-	1713	908	958	1020	1101	2027	1343	1410	1494	1605