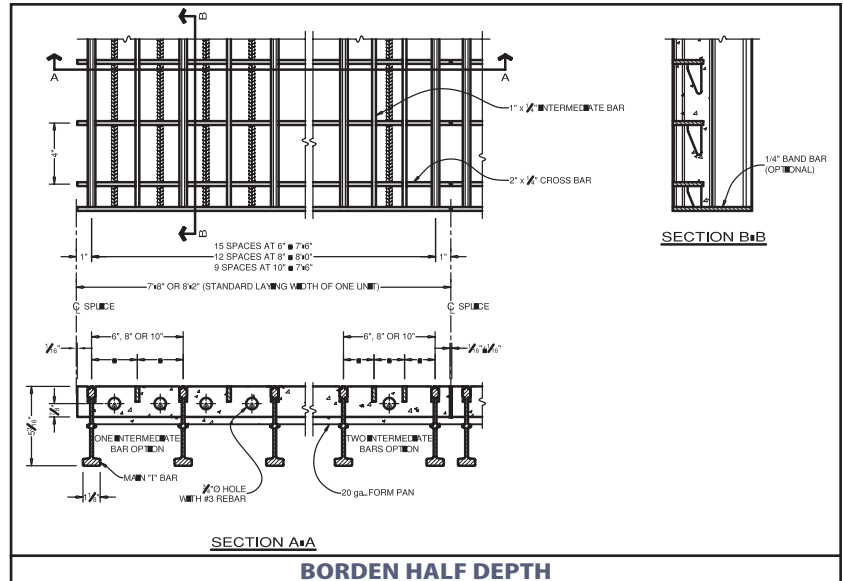


**BORDEN  
GRATINGS**  
www.bordengratings.com  
**Concrete Filled  
Roadway Grating**



**LOAD TABLE**

Grating Type	Bearing Bar Centre	Supplemental Bars	Weight		Steel Only		Cracked Composite Section				
			Steel Only	Steel & Concrete	Top Steel S	Bottom Steel S	+Sc	+Sc	-Sc	-Sc	Icr
			lbs./sq.ft.	lbs./sq.ft.	in. <sup>3</sup> /ft.	in. <sup>3</sup> /ft.	in. <sup>3</sup> /ft.	in. <sup>3</sup> /ft.	in. <sup>3</sup> /ft.	in. <sup>3</sup> /ft.	in. <sup>4</sup> /ft.
			kg/sq.m	kg/sq.m	mm <sup>3</sup> /m	mm <sup>3</sup> /m	mm <sup>3</sup> /m	mm <sup>3</sup> /m	mm <sup>3</sup> /m	mm <sup>3</sup> /m	mm <sup>4</sup> /m
R/R-L 6-3x4	6	1	18.86	49.57	4.500	4.700	74.20	4.98	3.97	5.86	139.40
			92.08	242.02	6.15E+06	2.53E+05	3.99E+06	2.65E+05	2.13E+05	2.15E+05	1.90E+08
R/R-L 8-4x4	8	1	15.63	46.12	12.513	5.994	63.20	3.81	2.98	4.39	110.60
			76.31	225.18	1.71E+07	3.22E+05	3.40E+06	2.05E+05	1.60E+05	2.36E+05	1.51E+08
R/R-L 10-5x4	10	1	13.67	44.16	8.342	3.996	56.20	3.12	2.69	3.57	92.40
			66.74	215.61	1.14E+07	2.15E+05	3.02E+06	1.68E+05	1.45E+05	1.92E+05	1.26E+08
R/R-L 6-2x4	6	2	19.93	50.33	6.257	2.997	83.30	5.09	4.49	6.61	146.10
			97.31	245.73	8.54E+06	1.61E+05	4.48E+06	2.74E+05	2.41E+05	3.55E+05	2.00E+08
R/R-L 8-2.67x4	8	2	16.43	46.69	12.685	3.568	69.70	3.88	3.88	3.32	114.70
			80.22	227.96	1.73E+07	1.92E+05	3.75E+06	2.09E+05	2.09E+05	1.78E+05	1.57E+08
R/R-L 10-3.33x4	10	2	14.32	44.62	6.342	1.784	61.10	3.15	2.62	3.95	95.30
			69.92	217.85	8.66E+06	9.59E+04	3.28E+06	1.69E+05	1.41E+05	2.12E+05	1.30E+08

Grating Type	CAN/CSA-S6-06 CL-625 (in.)								AASHTO HS20-1996 (in.)			
	(mm.)								(mm.)			
	Bearing Bars Parallel to Traffic				Bearing Bars Pependicular to Traffic				Bearing Bars Parallel to Traffic			
	Strength	Deflection			Strength	Deflection			Strength	Deflection		
		L/800	L/700	L/600		L/800	L/700	L/600		L/800	L/700	L/600
R/R-L 6-3x4	54.0	-	-	-	106.8	42.0	44.4	48.0	123.6	56.4	60.0	63.6
	1372	-	-	-	2713	1067	1128	1219	3139	1433	1524	1615
R/R-L 8-4x4	42.0	-	-	-	85.2	38.4	40.8	43.2	98.4	52.8	55.2	61.2
	1067	-	-	-	2164	975	1036	1097	2499	1341	1402	1554
R/R-L 10-5x4	34.8	-	-	-	64.8	36.0	37.2	39.6	76.8	52.8	55.2	58.8
	884	-	-	-	1646	914	945	1006	1951	1341	1402	1494
R/R-L 6-2x4	55.2	-	-	-	121.2	43.2	45.6	48.0	135.6	60.0	63.6	68.4
	1402	-	-	-	3078	1094	1158	1219	3444	1524	1615	1737
R/R-L 8-2.67x4	43.2	-	-	-	88.8	38.4	40.8	43.2	102.0	55.2	58.8	62.4
	1097	-	-	-	2256	975	1036	1097	2591	1402	1494	1585
R/R-L 10-3.33x4	36.0	-	-	-	68.4	36.0	38.4	40.8	80.4	52.8	56.4	58.8
	914	-	-	-	1737	914	975	1036	2042	1341	1433	1494