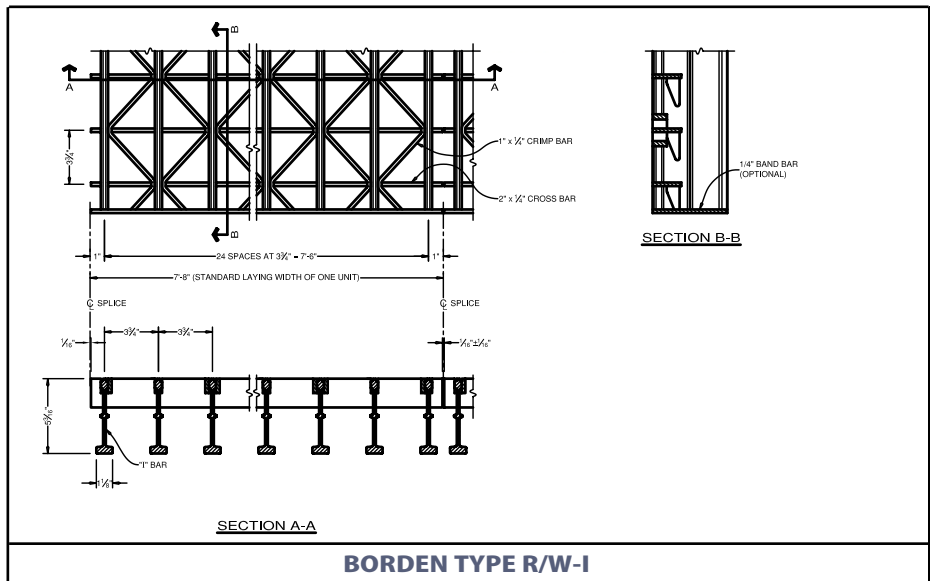
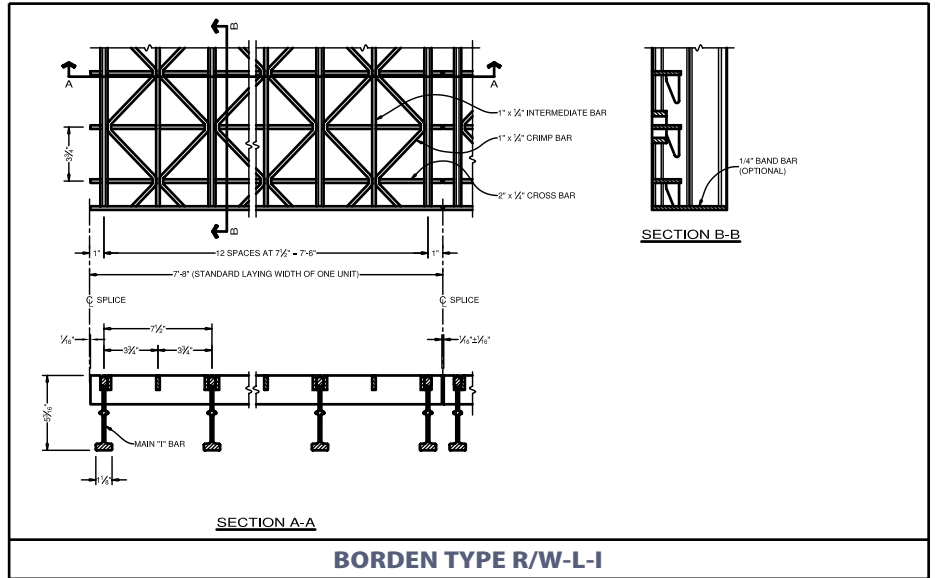




www.bordengratings.com

Crimped I-Bar Roadway Grating



LOAD TABLE

Grating Type	Weight	Moment of Inertia	Section Modulus		CAN/CSA-S6-06 CL-625								AASHTO HS20-1996			
			Top	Bottom	(in.)				(mm.)				(in.)			
					Bearing Bars Parallel to Traffic				Bearing Bars Perpendicular to Traffic				Bearing Bars Parallel to Traffic			
			Strength	Deflection			Strength	Deflection			Strength	Deflection				
	lbs/sq.ft.	in ⁴ /ft.	in ³ /ft.	in ³ /ft.	L/800	L/700	L/600	L/800	L/700	L/600	L/800	L/700	L/600	L/800	L/700	L/600
R/W-L-I	19.44	8.93	3.18	3.55	53.9	51.0	-	-	32.2	-	-	-	81.4	59.3	63.2	68.0
	94.91	1.22E+07	1.71E+05	1.19E+05	1369	1295	-	-	818	-	-	-	2068	1506	1605	1727
R/W-I	26.40	13.79	4.25	6.62	77.1	63.6	67.9	73.3	41.9	-	-	-	92.6	65.4	69.7	75.1
	128.90	1.88E+07	2.28E+05	3.56E+05	1958	1615	1725	1862	1064	-	-	-	2352	1661	1770	1908